



Community Health Needs Assessment Report

Trinity Kenmare Community Hospital Kenmare, North Dakota

Published 4/22/2025

Introduction:

Within the city of Kenmare, Trinity Kenmare Community Hospital is a 25-bed, non-profit hospital in Ward County, North Dakota, in the northwest area of the state, approximately 50 miles northwest of Minot and 25 miles from the Canadian border. Our hospital is a Critical Access, Level 5 Trauma Care Center with a 24-hour emergency room.

Trinity Kenmare Community Hospital is committed to the mission of Trinity Health by preserving and improving the quality of health for the people we serve. Our mission is to excel at meeting the needs of the whole person through the provision of quality healthcare and health related services. Our vision is to be recognized as the preferred regional healthcare provider. Trinity Kenmare Community Hospital will achieve and sustain this excellence by:

- Being futuristic and proactive in continuous performance improvements.
- Exceeding professional quality standards and customer expectations.
- Providing sensitivity in service delivery and excellence in skills.
- Efficient utilization of resources.

Committed to the continuous improvement of quality, the employees, medical staff and board of directors uphold the following values:

- **Integrity:** A personal belief that as individuals we uphold our principles and conduct ourselves with honor.
- **Passion:** Personal commitment to make a difference in providing care for others.
- **Accountability:** In recognizing our responsibilities, we will be accountable for all that we do.
- **Respect:** A regard for the uniqueness of the human spirit and the dignity of others.
- **Teamwork:** Recognizing the value in and contribution from each part of the whole.

Kenmare Hospital was established in 1906. On May 3, 2001, Trinity Health purchased Kenmare Community Hospital from an out-of-state for-profit company. With a tertiary care hospital in Minot, more than 40 specialties, several rural health clinics, and a long-term care facility, Trinity Health provides a full complement of healthcare services to the region. Since 1922, Trinity Health has been committed to looking ahead and improving in ways that provide the best, most compassionate care possible for patients, families, and communities. Throughout its line of



services, Trinity Health seeks to identify and fulfill community needs by meeting and exceeding national standards, and helping people live longer, healthier lives.

Trinity Health has evolved into the region's premier healthcare organization with facilities in several communities as well as partnerships and affiliations throughout the region. Trinity Medical Group is a comprehensive association of primary doctors, specialty physicians and healthcare professionals serving North Dakota and Eastern Montana. Trinity Health continues to lead the way in technology and procedural advancement with professional and support staff committed to the well-being of each individual. Both Trinity Health hospitals and Trinity Medical Group are accredited by The Joint Commission. The variety and depth of Trinity Health's services provides patients and their families a smooth continuum of care from a hospital stay to outpatient services, home care to long-term care. Trinity Health is proud of its achievements, but our pursuit of quality means we will never be satisfied. We will always be searching for a better quality of life for the communities and the region that we serve.

Trinity Kenmare Community Hospital provides the following services to our community:

- 4 Acute Care Beds
- 21 Swing Beds
- 24-Hour ER
- 24-Hour Nursing Care
- 24-Hour Physician on Call
- Acute Care
- Observation
- Ancillary Services:
 - Laboratory
 - Blood draw
 - Urine Analysis
 - Drug testing
 - Radiology Services
 - Digital Radiology
 - EKG
 - Ultrasound
- Injections
- Infusions
- Wound Dressing Care
- Free blood pressure checks
(when Kenmare Clinic is closed)
- Health Information Management
- Occupational Therapy (1 day a week)
- Physical Therapy
- Speech Evaluation
- Social Services

Trinity Kenmare Community Hospital is pleased to submit this Community Health Needs Assessment. We do so both as a matter of compliance with Section 501(r)(3) of the Internal Revenue Code, as mandated in the Patient Protection and Affordable Care Act, and as an obligation to those we serve. As an organization, we have taken this change in law as an opportunity to improve our community service and continuously focus on meeting the changing health care needs of our community.

Consistent with the requirements of Section 501(r)(3) the Community Health Needs Assessment Report is organized as follows:

- Our Community
- Review of previous Community Health Needs Assessments
- Community Health Needs Assessment Methodology

- Prioritized Community Health Needs
- Health Resources

Our Community



★ Designed by TownMapsUSA.com

Although our hospital is located in Kenmare, North Dakota, we have historically defined our “community” as a broader area extending approximately 30 miles in all directions and including approximately 5,500 people. Throughout this document, any reference to “community” is meant to indicate this broad service area. Within our broader community, approximately 50% of our inpatients and outpatients reside within and immediately around Kenmare—within zip code 58746. Approximately 35% of our patients come from the other areas in our community. The remaining 15% are primarily individuals from around the state and country who happen to need health care while visiting our area.

With a population of approximately 1,000 people and just one neighborhood, Kenmare is the 49th largest community in North Dakota. Unlike some cities where white-collar or blue-collar occupations dominate the local economy, Kenmare is neither predominantly one nor the other. Instead, it has a mixed workforce of both blue- and white-collar jobs. Kenmare is a city of sales and office workers, service providers, and construction workers and builders, surrounded by an agricultural community. More than a third of the city’s population works in administrative support, food service and education.



The data presented below pertains to 2024 demographics for North Dakota, Ward County and Kenmare, as obtained from U.S. census data and Data USA.

	North Dakota	Ward County	Kenmare
Population	783,926	67,876	1,016
Median age	35.4	33.0	51.0
Caucasian	86.4%	86.9%	94.1%
Hispanic or Latino	4.9%	7.4%	1.7%
American Indian	5.3%	2.8%	0.8%
African American	3.8%	4.8%	0.2%
Asian	1.7%	1.7%	N/A
Median Household Income	\$75,949	\$79,273	\$59,063
Uninsured Residents	7.2%	6.1%	4.6%
Persons Living in Poverty	10.8%	9.0%	7.5%

The population size of the city of Kenmare is approximately 0.1% of the state’s population and about 1.4% of Ward County’s population. From the last Community Health Needs Assessment Report in 2022, we noted an increase in population from 939 residents in 2019 to 1,016 residents in 2022.

A significant age gap exists, with the median age in Kenmare being approximately 15 years higher than the state’s median age and 18 years higher than Ward County’s median age. The median age in Kenmare has increased from 45.1 in 2021 to 51.0 in 2022, which is the result of younger families and individuals moving out of the community, few children being born in the area, and the generally aging population.

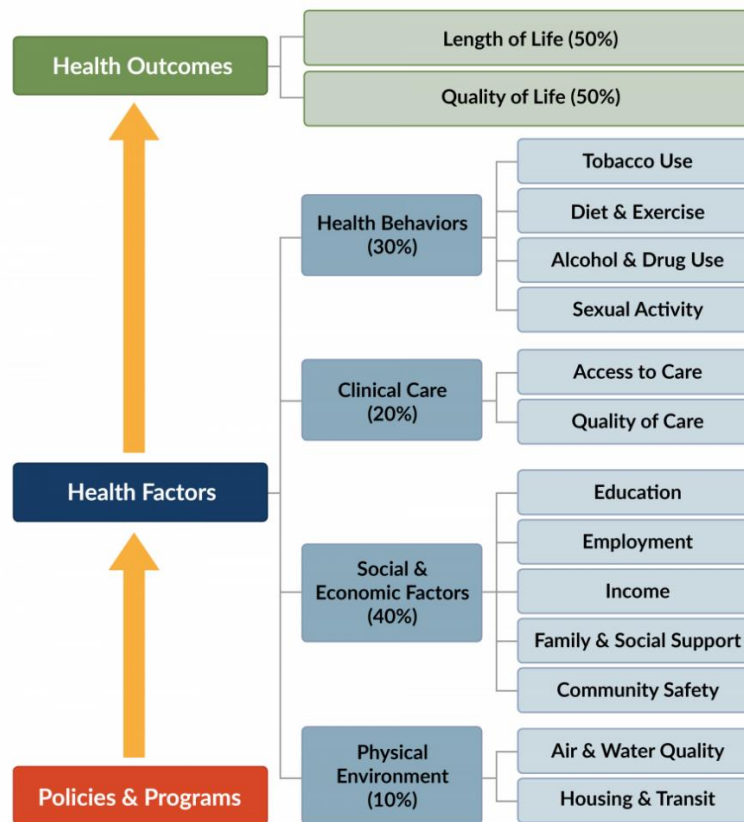
Kenmare is a fairly homogenous racial community. Kenmare has a higher percentage of Caucasian individuals and a lower percentage of each racial category than both the state and the county. Hispanic and Native American individuals are the largest minority groups in Kenmare. Due to the geographic location of Kenmare, with no Native American reservations nearby, Kenmare has a lower percentage of Native American individuals than Ward County or the state of North Dakota.

Ward County enjoys greater financial success, as evidenced by the median household income, than North Dakota as a whole. However, those figures may be skewed by the presence of Minot in the county, approximately 50 miles southeast of Kenmare. Kenmare’s median household income is approximately \$15,000 lower than the state average and \$20,000 lower than Ward County’s average. In 2019, Kenmare’s median household income was only \$3,800 lower than the state average and \$7,600 lower than the county average, which indicates that median household income is growing slower in Kenmare than in other parts of the county and state.

The Population Health Institute (“PHI”) publishes annual health data for every county in the United States. The data is aggregated into health outcomes and health factors. The PHI separates health outcomes into mortality (length of life) and morbidity (quality of life). Health factors are separated into four factors that largely influence the health outcomes: physical environment, society and economics, clinical care, and health behaviors.

Ward County Health Rankings (Out of 48 ND Counties)			
	2025	2022	2019
Mortality (Length of life)	8	8	2
Morbidity (Quality of life)	12	13	23
Overall Health Outcomes	5	6	7
Health Behaviors	9	16	34
Clinical Care	9	8	2
Social & Economic Factors	22	24	27
Physical Environment	30	33	48
Overall Health Factors	12	19	28

Between 2019 and 2024, out of 48 ranked counties, Ward County's health outcomes ranking improved slightly (from 7th to 5th) while its overall health factors ranking improved more significantly (from 28th to 12th). The slight improvement in health outcomes is the result of a significant increase in Ward County's morbidity (quality of life) ranking but an offsetting decrease in its mortality (length of life) ranking. In the same period, Ward County experienced drastic improvements relative to other North Dakota counties in the areas of health behaviors (from 34th to 9th) and physical environment (from 48th to 30th), as well as a smaller improvement in social & economic factors (from 27th to 22nd). However, Ward County worsened relative to other counties in the area of clinical care (from 2nd to 9th).



County Health Rankings model © 2014 UWPHI



Despite improvements and being one of the healthiest counties in the state, Ward County still falls in the bottom half of the state's counties in physical environment, indicating that there is still a lot of room for improvement in this area. The Population Health Institute bases the physical environment rankings on average daily air pollution, drinking water violations per year, percentage of households with at least one of four severe housing problems (overcrowding, high housing costs, lack of kitchen facilities and lack of plumbing facilities), the percentage of the population that drives alone to work, and the percentage of workers who commute more than 30 minutes to work. Ward County falls behind the rest of the county in the severe housing problems, in particular.

Because health outcomes are the long-term results of health factors, the current trends indicate that our community members are currently benefitting from relatively positive choices made in the past but may face worsened future health outcomes as the impact of their current health choices are manifested. However, as the county's health factor rankings improve, the likely impact on future health outcomes should continue to improve as well.

Review of Previous Community Health Needs Assessments

In its 2013, 2016, 2019 and 2022 community health needs assessments, Trinity Kenmare Community Hospital identified access to care, mental health, substance abuse, and obesity as significant community health needs. Since June 2022, Trinity Kenmare Community Hospital has taken the following steps to address these health needs.

Access to care

Access to services has been affected by workforce shortages across all sectors of the local economy. The organization has successfully recruited two Nurse Practitioners to the community to enhance access to primary care services. Additionally, an independent physician assistant has established a practice within the city. As a result, the community now benefits from two clinics providing healthcare services, thus increasing access for area residents. Trinity Health continues to employ both internal and external recruiting resources in its efforts to attract more professionals to work within the facility, including registered nurses.

Mental Health

Although there are no consumer-driven support groups available locally, the Trinity Kenmare Community Hospital provides its swing bed residents with telehealth services for behavioral health consultations with Trinity Health's mental health providers.

Substance Abuse

Trinity Kenmare Community Hospital hosted a substance abuse support group at the facility prior to the COVID-19 pandemic, however that sponsorship was temporarily halted due to the visitor restrictions and limitations established by federal and state regulators put in place during the past two years. The organization periodically evaluates the status of the pandemic for opportunities to resume this and other activities in the community.



Obesity

Since the 2022 community health needs assessment, obesity was not identified as a significant health need by interviewees. The adult obesity rate in Ward County is 25.7% compared to 27.6% for North Dakota. The rate of overweight people in Kenmare is 32.7% compared to 34.2% in North Dakota. The slight improvement in the area compared to the state may contribute to a perception obesity is not a significant health need in Kenmare.

Community Health Needs Assessment Methodology

Trinity Health's executives led the planning, conducting, and reporting of the community health needs assessment. We contracted with CliftonLarsonAllen LLP (CLA), a professional services firm, to conduct community interviews and to assist in preparing this Community Health Needs Assessment Report and the hospital's Implementation Strategy.

Interviews

We gathered qualitative information and perspectives on community health needs through one-on-one interviews with key community stakeholders. These interviews were conducted in December 2024. The primary goal of these interviews was to gather a range of perspectives on the community's health needs, including from the following specified groups within our community:

- People with special knowledge or expertise in public health
- Government health departments and other government agencies
- Leaders, representatives or members of low-income populations
- Leaders, representatives or members of minority populations
- Leaders, representatives or members of other medically underserved populations, such as young, elderly, and rural individuals

The following agencies and organizations participated in the community health needs assessment process by contributing their perspectives, opinions and observations. We thank them for their past and continued assistance.

- Trinity Kenmare Community Hospital
- First District Health Unit
- Kenmare Police Department
- North Central Human Service Center
- Ward County Sheriff's Department
- Ward County Board of Commissioners

We believe the individuals who participated on behalf of these organizations and agencies are qualified representatives of the identified groups because the nature of their work brings them into contact with those groups on a regular basis. For many of the individuals listed, the nature of their occupation requires them to consider the special needs of the groups identified.



Quantitative Data

The following data sources were utilized to supplement the qualitative community interview data in this Community Health Needs Assessment Report.

America's Health Rankings, Obesity in North Dakota

- <https://www.americashealthrankings.org/explore/annual/measure/Obesity/state/ND>

City of Kenmare

- <http://www.kenmarend.com/kenmare/about-kenmare/>

Data USA, Kenmare, ND & North Dakota Data

- <https://datausa.io/profile/geo/kenmare-nd?compare=north-dakota>
- <https://datausa.io/profile/geo/kenmare-nd?compare=ward-county-nd>

National Institute on Alcohol Abuse and Alcoholism

- <https://www.niaaa.nih.gov/alcohols-effects-health/alcohol-topics/alcohol-facts-and-statistics>
- <https://www.niaaa.nih.gov/publications/brochures-and-fact-sheets/understanding-alcohol-adverse-impact-health>

Neighborhood Scout

- <https://www.neighborhoodscout.com/nd/kenmare>

The Population Health Institute and Robert Wood Johnson Foundation, County Health Rankings

- <https://www.countyhealthrankings.org/health-data/north-dakota/data-and-resources>

The State of Childhood Obesity, North Dakota

- <https://stateofchildhoodobesity.org/states/nd/>

Substance Abuse and Mental Health Services Administration

- https://www.stopalcoholabuse.gov/media/ReportToCongress/2022/state_reports/north_dakota_profile.pdf

Trinity Health, Trinity Kenmare Community Hospital

- <https://www.trinityhealth.org/locations/kenmare-community-hospital/>

U.S. Census Bureau Ward County and North Dakota QuickFacts

- <https://www.census.gov/quickfacts/fact/table/wardcountynorthdakota,ND/PST045221>

U.S. Department of Health & Human Services, North Dakota Adolescent Substance Abuse Facts

- <https://www.hhs.gov/ash/oah/facts-and-stats/national-and-state-data-sheets/adolescents-and-substance-abuse/north-dakota/index.html>

Consumer Price Index, Midwest Region – November 2024

- https://www.bls.gov/regions/mountain-plains/news-release/consumerpriceindex_midwest.htm

Fuel Prices

- <https://gasprices.aaa.com/?state=ND>

How gas prices have changed in North Dakota in the last week – 12/14/2024

- <https://stacker.com/north-dakota/how-gas-prices-have-changed-north-dakota-last-week>

City-Data.com

- <https://www.city-data.com/city/Kenmare-North-Dakota.html>



Fatal overdose part of statewide trend

- https://www.google.com/url?sa=t&rct=j&q=&esrc=s&source=web&cd=&ved=2ahUKEwibpojy9baKAxV1ADQIHbW-WAYQFnoECA4QAQ&url=https%3A%2F%2Fwww.minotdailynews.com%2Fnews%2Flocal-news%2F2024%2F01%2Ffatal-overdose-part-of-statewide-trend%2F&usg=AOvVaw2GXeHFPwT_bUn4uET0JBwi&opi=89978449

2022 North Dakota Epidemiological Profile

- <https://www.hhs.nd.gov/behavioral-health/data>

E-Cigarette Use Among Youth

- <https://www.cdc.gov/tobacco/e-cigarettes/youth.html#>

Information Gaps

Although we are unable to identify any specific information gaps, we recognize members of the community representing different organizations and groups may have provided different opinions regarding community health needs, prioritization of those needs, and/or potential responses to the needs.

Analytical Methods Applied

We applied various analytical methods to the available data. During interviews, we asked participants for their input regarding health needs, the prioritization of those health needs, and possible responses to identified health needs. We analyzed the historic prevalence of various health issues in our community and compared those with county, state, and national averages. Finally, we reviewed previously identified health priorities as identified by national, state, and county health organizations.

Request for Feedback

Trinity Kenmare Community Hospital was willing to consider written comments related to its last Community Health Needs Assessment Report and Implementation Strategy but received no such input. If any reader would like to provide input on this community health needs assessment, they can submit their comment(s) in writing to the following address:

Attention: Administration/CFO
RE: Kenmare Community Health Needs Assessment
PO Box 5020
Minot, ND 58702-5020



Determination of Significance

While many needs were identified during the community health needs assessment process, this report focuses on those needs that were deemed significant by Trinity Kenmare Community Hospital. A health need's significance was evaluated based on many factors. The factor given the most weight was the relative importance placed on the health need by the community participants. Other factors included the number of people in our community impacted by the health need, the impact of that health need on quality of life and length of life, and the impact on low-income, minority, and other medically underserved populations. The decision was made by a diverse team of individuals from Trinity Health who were involved throughout the community health needs assessment process.

Process and Criteria for Prioritizing Identified Health Needs

As with the determination of significance, the prioritization of identified significant health needs was determined based on many factors. The factor given the most weight was the relative importance placed on the health need by the community participants. Other factors included the number of people in our community impacted by the health need, the impact of that health need on quality of life and length of life, and the impact on low-income, minority, and other medically underserved populations. The decision was made by a diverse team of individuals from Trinity Health who were involved throughout the community health needs assessment process.

Prioritized Community Health Needs

Based on the interviews conducted and research related to city, county, state, and national data, Trinity Kenmare Community Hospital determined that the current prioritization of significant community health needs is as follows:

- Access to health care services – primary health need
- Mental health – secondary health need
- Substance abuse – secondary health need

Access to Care

From the last community health assessment issued, access to care continues to be an issue. The common issues addressed under access to care are difficulties with transportation, limited medical specialty services, limited substance abuse treatment options, limited mental health services, limited home health access, and evening and weekend pharmacy access.

Interview participants identified transportation as one of its significant community health needs for Ward County. Due to Kenmare's rural location, limited transportation options may be a serious constraint for residents to receive proper medical treatment. Patients who need medical attention beyond the services offered by Trinity Kenmare Community Hospital must travel about 50 miles to Minot, which is about an hour away. Long-distance personal transportation continues to increase in cost with the rising price of vehicles, gasoline, and repairs and maintenance. In March 2022, inflation was approximately 8.5%. Since then, it has continued to rise, with inflation being 2.6% in November 2024. Ward County is among the most expensive fuel price areas in the state, with a



gallon costing an average of \$2.88. The Minot Metro area ranks first compared to Bismarck, Grand Forks and Fargo. North Dakota's average price per gallon fell from \$2.91 per gallon in December 2023 to \$2.81 per gallon in December 2024, however the Minot area increased from \$2.84 to \$2.88 during the same timeframe. Aside from the rising cost of gasoline, general inflation that makes all goods and services more expensive also results in less money available for transportation-related costs. Finally, even if an individual has a mode of transportation, the time away from work, including approximately two hours of travel time, can also be problematic for those who are working hard to support themselves and their families. Individuals who lack a reliable vehicle, who cannot afford the costs of the drive to Minot, or who may not have family or friends they can rely on are especially impacted by this problem, including low-income individuals, elderly individuals, and youth.

Based on the interviews conducted, an issue that continues to persist for Trinity Kenmare Community Hospital is the lack of specialty services offered. Community participants indicated a desire for local access to podiatry, mammogram screenings, maternity, geriatric and pediatric services, as well as home health and hospice care. Although all these services are available in Minot, the distance is a serious barrier for some of our community members.

Approximately 29.7% of the residents in Kenmare are age 65 or older. Home health care services are an important aspect of daily life for elderly and disabled individuals in our community. The elderly require more frequent medical attention and may struggle to get to a hospital or clinic to obtain such services. Home health services, in which a trained individual visits an elderly or disabled person in their home, are a valuable alternative for these individuals. Unfortunately, the home health services offered by Trinity Health Hospital in Minot do not extend to the city of Kenmare and no other medical providers offer these services in our community. The majority of interview participants expressed a desire for home health services to be offered in our community.

Kenmare's local pharmacy, Kenmare Drug, is open Monday through Friday from 8:30 a.m. to 5:30 p.m. While community members expressed gratitude for the local pharmacy, they also indicated concern about after-hours and weekend incidents, such as a youth who notices that an important prescription has run out on Friday evening. In such a situation, they may not be able to access a refill until Monday morning, which can threaten their health during the gap in medication.

Related to access, community participants indicated that a safe room would be helpful at Trinity Kenmare Community Hospital. The idea would be to have a separate room, away from the general population, to temporarily house and treat potential crime victims, individuals undergoing severe mental episodes, and potentially dangerous individuals. This would protect the privacy of the individual during a sensitive time. It would also protect the general population if an incident were to occur with a dangerous individual.

As discussed later in this report, substance and mental health, including access to treatment options, are also significant concerns in our community.

Mental Health

A common concern among community members was mental health among both adults and children. Depression and anxiety were frequently identified for children and young adults while depression and loneliness were frequently identified for older adults. Although each of these issues have been a concern in our community for a long time, community participants agreed that each issue worsened during the COVID pandemic and has remained elevated.

Community participants indicated several factors that negatively influence the mental health of our community members, including:

- Economic/financial struggles among adults and the resulting impact on their children
- Increased time on social media and playing video games, with more exposure to bullying and similar negative influences through those apps and games
- Lack of emotional development during the COVID pandemic leading to disproportionately strong responses to seemingly minor issues, lack of social skills, panic attacks and similar issues
- Self-medication through alcohol and other drug use
- Perceived negative social implications for those who seek mental health care

Interviews revealed the community has limited mental health treatment services. Previously, a counselor provided services one day a week through the Rural Health Consortium, but this ended during COVID. The demand for mental health visits is far greater than what one counselor could offer and has increased due to the pandemic. Participants suggested that two counselors working 2-3 days a week are needed to meet the demand. Those with severe or urgent needs, like suicidal tendencies, must seek distant treatment options in places like Minot, which are less accessible for low-income, elderly individuals and youth.

Substance Abuse

Interview participants indicated serious concerns about substance abuse in the Kenmare area, although there was some disagreement about the prioritization of those substances. The commonly identified substances were meth, alcohol, and vaping products. Interview participants indicated that meth is commonly found among adults between ages 20-40 while e-cigarettes and vaping products are commonly used among teens and young adults. Interview participants indicated that alcohol abuse impacts all age groups, starting with children in middle school and becoming a more serious issue in high school.

According to the National Institute on Alcohol Abuse and Alcoholism, alcohol is the most commonly abused substance in the United States. In a 2023 survey, 84.9% of adults reported drinking alcohol at some point in their lifetime and 51.6% reported that they drank alcohol in the last month. In the same survey, 21.6% of youth ages 12-17 reported drinking alcohol at some point in their lifetime and 6.9% reported drinking alcohol in the last month. 23.5% of adults reported that they engaged in binge drinking within the last month and 3.9% of youth ages 12-17 reported that they engaged in binge drinking within the last month. The same study found that 2.9% of youth between the ages of 12 and 17 had alcohol use disorder, a chronic brain disorder marked by

compulsive drinking, loss of control over alcohol use, and negative emotions when not drinking. AUD in this age-group was more common among girls than boys. The majority of these statistics are slightly improved compared to the 2020 survey, except for teenage binge drinking, which worsened from 1.7% to 3.9%.

According to the Population Health Institute, 23.5% of adults in North Dakota and 21.0% of adults in Ward County indicated that they drink excessively in 2023. On a positive note, each of those is slightly improved compared to 2020 rates. Additionally, 29% of Ward County driving deaths involve alcohol impairment, although that rate is well below the rate of 41% in North Dakota. Ward County's relatively positive statistics can be a bit misleading since North Dakota ranks as having the fourth-highest per capita alcohol consumption in the United States but the highest rate of adult binge drinking in the United States. Further, this problem isn't limited to adults. In a 2022 survey of North Dakota residents conducted by the Substance Abuse and Mental Health Services Administration, alcohol consumption increased from 3.1% in Middle School to 16.1% in high school, then 51.1% in young adults and 61.1% in adults over age 21.

North Dakota

State Population: 765,309
Population Ages 12–20: 91,000

Past-Month Alcohol Use	
Ages 12–20	
Past-Month Alcohol Use – Number (Percentage)	24,000 (25.9%)
Past-Month Binge Alcohol Use – Number (Percentage)	16,000 (17.3%)
Ages 12–14	
Past-Month Alcohol Use – Number (Percentage)	1,000 (3.1%)
Past-Month Binge Alcohol Use – Number (Percentage)	1,000 (2.1%)
Ages 15–17	
Past-Month Alcohol Use – Number (Percentage)	4,000 (16.1%)
Past-Month Binge Alcohol Use – Number (Percentage)	2,000 (8.5%)
Ages 18–20	
Past-Month Alcohol Use – Number (Percentage)	19,000 (51.1%)
Past-Month Binge Alcohol Use – Number (Percentage)	13,000 (35.7%)
Adults Ages 21+	
Past-Month Alcohol Use – (Percentage)	323,000 (61.1%)
Past-Month Binge Alcohol Use – (Percentage)	172,000 (32.5%)

Interview participants indicated that the large alcohol consumption problem in Kenmare stems from many factors:

- A history of significant alcohol consumption has created a culture of normalcy among adults, many of whom don't even view it as a problem today.
- Bars are popular gathering locations for socializing during the long winter months.
- For those who aren't interested in going to a bar, drinking at home is also very common.
- Adults tend to view alcohol consumption by younger teens as acceptable. Adults indicate that the teens are being supervised.



- The area experiences significant drinking and driving rates, especially in the months with nice weather.
- Alcohol is relatively affordable and easy to obtain.

“Vaping” (i.e., vape pipes, e-cigarettes, hookah pens) use rates have declined in the United States, however the use among youth has continued to rise. According to the CDC 1.63 million students used e-cigarettes, which is comprised of 410,000 middle school students and 1.21 million high school students. In North Dakota, 10.3% of middle school and 33.1% of high school students reported they are currently using electronic vapor products. By 12th grade, over 50% of North Dakota high school students report they have used electronic vapor products. This aligns with interview participants’ concerns regarding the rise of e-cigarettes among Kenmare’s middle school and high school students. Interview participants indicated that a significant part of their concern is that parents of these adolescents don’t seem to understand just how common such use is and how it may be impacting their child(ren).

Conclusion:

Trinity Kenmare Community Hospital conducted this community health needs assessment to better understand our community’s current health needs. Based on this information, the hospital is responsible for responding appropriately. An Implementation Strategy, which defines plans responses to these significant community health needs, will be developed and approved by the board of directors no later than November 15, 2025. Upon approval, the Implementation Strategy will be used as a guiding tool in the coming years in attempting to improve the health of our community by effectively serving the needs of its individual residents.

Health Resources:

The following resources are currently available in our community to address the significant community health needs discussed in this report. Despite our efforts, we recognize that this list may not be all-inclusive and welcome any information to add available resources and increase its usefulness. Such information can be sent to the address provided on page 9 of this report.

First District Health Unit and the Ward County Human Service Zone provide support to our community members in numerous ways. The services and programs offered by First District Health Unit include:

- Assistance and resources for parents of babies, kids and teens
- COVID-19 testing and vaccination information
- Emergency response and how you can be more prepared
- Environmental health, including food, water, air, lodging, septic systems, inspections, tattoo-piercing, etc.
- Pregnancy planning and testing, as well as testing for sexually transmitted infections
- Flu vaccinations for all ages
- Harm reduction, including Narcan, syringe service, responsible beverage server training and needle disposal
- Testing and treatment for HIV/AIDS, sexually transmitted infections and tuberculosis
- Information, resources and appointments for adult and childhood immunizations
- Monthly newsletters, education, resources and tips for healthy living
- Help to quit and stay smoke-free, including tobacco and vaping
- WIC and nutrition, including food benefits for children five and younger, and pregnant and breastfeeding women
- Programs and resources for women's health

The programs and services offered by the Ward County Human Service Zone include child protection & family preservation, foster parent recruitment, and economic assistance. For a complete list of their activities, we recommend visiting their offices and/or websites:

- First District Health Unit
113 1st Ave NW, Kenmare
www.fdhu.org
- Ward County Human Service Zone
225 3rd Street SE, Minot
<https://www.co.ward.nd.us/215/Human-Service-Zone>

In addition to governmental support, the following health care facilities and related organizations are currently available within our community:

- Trinity Kenmare Community Hospital – 317 1st Avenue NW
- Trinity Community Clinic – Kenmare – 307 1st Avenue NW
- Compass Health – 100 1st Avenue SE



- Kenmare Drug – 109 1st Avenue NW
- Kenmare Dental Office – 318 1st Avenue NE
- Optometry Clinic of Kenmare – 28 2nd Street NW

Many additional services, including several substance abuse treatment centers, are available in Minot.