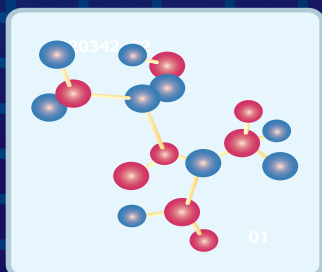


# CANCER LIFE PROGRAM



2006-2007  
Annual Report

## TRINITY HEALTH STATISTICS - 2006

### Cancer Incidence by Site and Sex Distribution

Site Distribution for new cases accessioned in 2006, 612 total cases.

The following table demonstrates that four of the most common malignancies in men and women for 2006 at Trinity Health are consistent with that estimated in the 2007 Cancer Facts and Figures published by the American Cancer Society.

<b>Male</b>	<b>352</b>	<b>57%</b>	<b>Female</b>	<b>263</b>	<b>43%</b>
Prostate	137	38.9%	Breast	70	26.6%
Lung	41	11.6%	Lung	35	13.3%
Colorectal	40	11.4%	Gyn	32	12.2%
Bladder	28	6.2%	Colorectal	26	10%
Kidney/Renal Pelvis	15	4.3%	Lymphoma	14	5.3%
Lymphoma	11	3.1%	Melanoma	10	3.8%
Melanoma	10	2.8%	Kidney/Renal Pelvis	9	3.4%
Pancreas	9	2.6%	Leukemia	9	3.4%
Chronic Myeloproliferative Disorder/ Myelodysplastic Syndromer	8	2.3%	Chronic Myeloproliferative Disorder/ Myelodysplastic Syndromer	9	3.4%
Liver	5	1.4%	Pancreas	8	3%
Other Sites	48	13.6%	Other Sites	41	15.6%
<b>Total</b>	<b>352</b>	<b>100%</b>	<b>Total</b>	<b>263</b>	<b>100%</b>

According to the ACS, 51% of malignancies diagnosed in 2007 will occur in men. Our 2006 data reveal that 55% of the malignancies diagnosed at Trinity Health were in men. This approximates the ACS estimation.

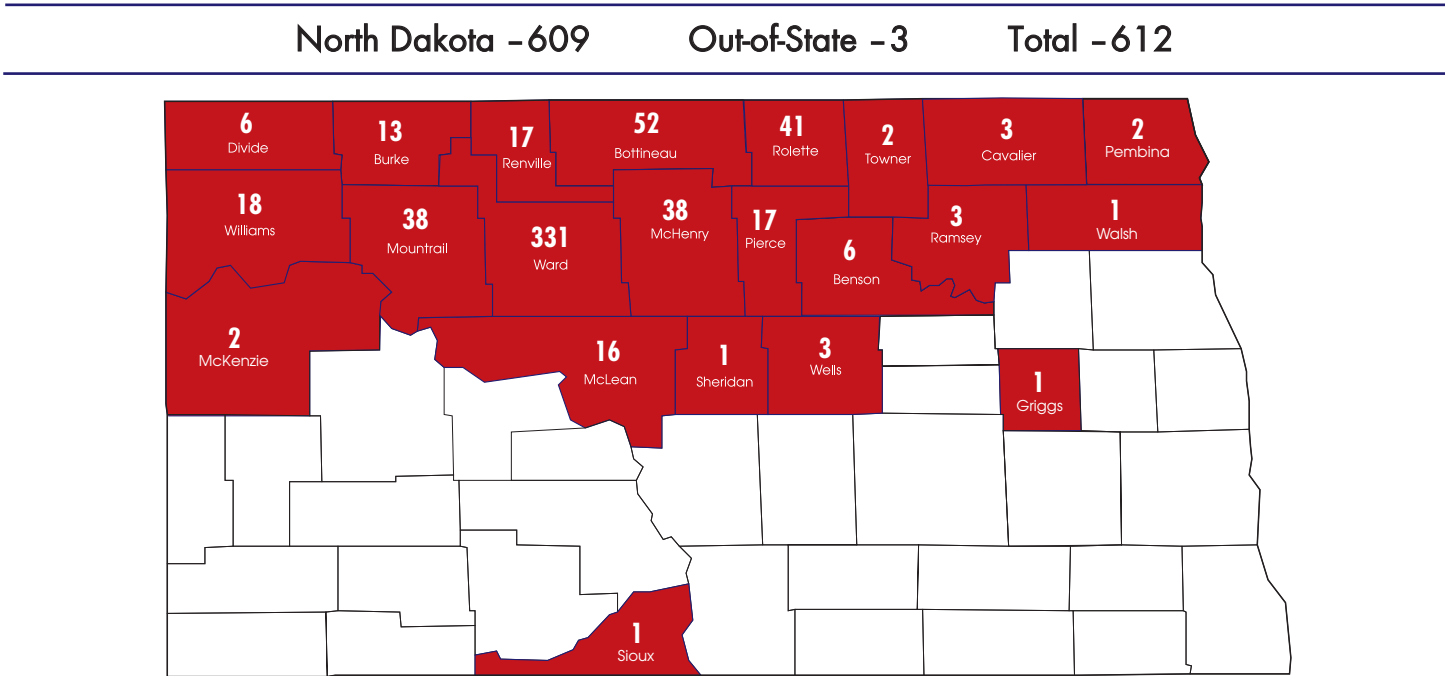
The incidence of cancer increases with advancing age. In fact, age is a risk factor for many malignancies. The following table of age distribution at diagnosis for Trinity Health supports this.

<b>Age Distribution</b>	<b>Male Total</b>	<b>Female Total</b>
0-29	5	13
30-39	4	6
40-49	16	27
50-59	49	46
60-69	97	49
70-79	113	61
80-89	60	50
90+	8	11
Other	0	0

## 2006 STATISTICS

### Geographic Distribution (by county)

The majority of patients diagnosed and treated at our facility in 2006 were from northwest and north central North Dakota. Please refer to the county map below for geographic distribution.



The four leading sites of new cancer cases for Trinity Health from 1990-2005 are consistent with that estimated in the 2006 Cancer Facts and Figures published by the American Cancer Society. The table below lists the sites of new cancer cases in the Trinity Health registry for 1990-2005.

Total Number of Cases in Cancer Registry by Site: 1990-2006			
Prostate	1,529	Buccal Cavity/Pharynx	139
Breast	996	Brain/Nervous System	138
Lung	841	Leukemias	158
Colon	648	Pancreas	141
Cervix/CINIII	337	Ovary	115
Bladder	377	Stomach	86
Lymphoma	252	Melanoma/Skin	147
Rectum/Rectosigmoid	217	Soft Tissue	72
Kidney/Renal Pelvis	220	Larynx	74
Corpus Uteri/Uterus, NOS	209	Multiple Myeloma	74
Unknown site	166	Esophagus	79
		Thyroid	72
		Liver	45
		Other Biliary	35
		Testis	28
		Small Intestine	24
		Vulva	23
		Bones/Joints	22
		Gallbladder	20
		Subtotal	7,284
		Sites with <10 cases	30
		<b>Total</b>	<b>7,314</b>

\*Sites include: anus; intrahepatic; retroperitoneum; nasal cavity, middle ear and accessory sinuses; pleura; other nonepithelial skin; vagina; other female genital organs; penis; other male genital organs; ureter; other urinary organs; eye/orbit; and other endocrine (including thymus)

# PROSTATE CANCER TREATMENT AT TRINITY HEALTH

Between 1996 and 2006, 1,008 patients were diagnosed as having prostate cancer at Trinity Health (937 Analytic cases and 71 Non-Analytic cases). Please refer to Table 1.

TABLE 1

Year	Analytic	Non-Analytic
1996	59	7
1997	66	7
1998	51	4
1999	66	4
2000	74	11
2001	103	14
2002	123	16
2003	78	5
2004	75	1
2005	107	1
2006	135	1
<b>Total</b>	<b>937</b>	<b>71 = 1,008</b>

Please refer to Figure 3 for specific breakdown of the National Cancer Database AJCC stage distribution for prostate cancer cases for 2005, compared to Trinity Health data of 1996-2006. This figure illustrates the similarity in stage at diagnosis for the NCDB and Trinity Health.

## PROSTATE CANCER

Trinity Database 1996-2006

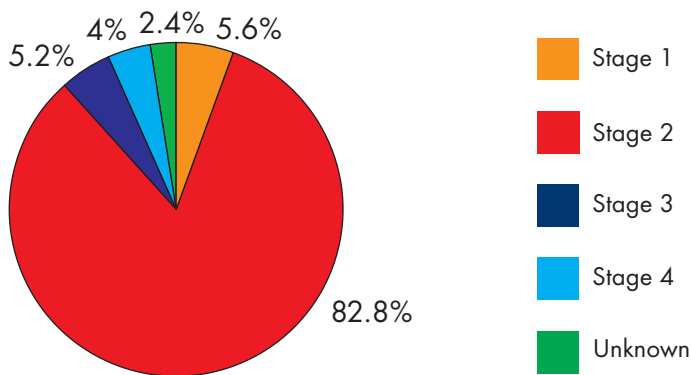


Figure 3a

NCDB 2005

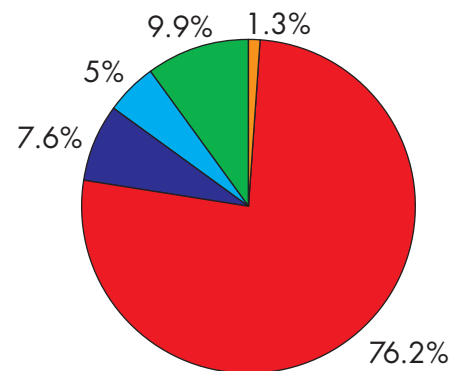
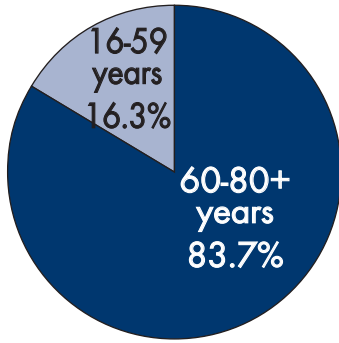


Figure 3b

After 1991, TNM staging was implemented and mandatory at Trinity Health, and greater than 90% compliance per year has been achieved.

## AGE DISTRIBUTION PROSTATE CANCER

Trinity Health 2006 Cases



NCDB 2005 Cases

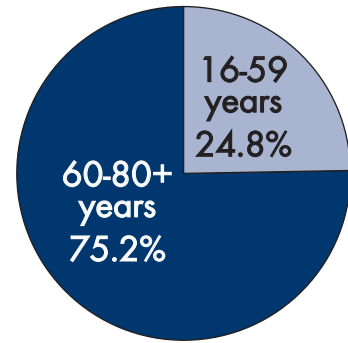


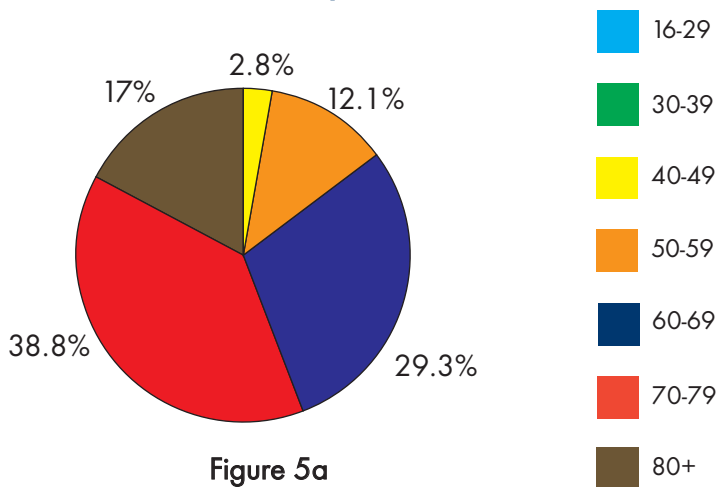
Figure 4

Due to the natural history of prostate cancer, a significant proportion of our patients are diagnosed as having prostate cancer at 60 years of age or older. Please refer to figure 4.

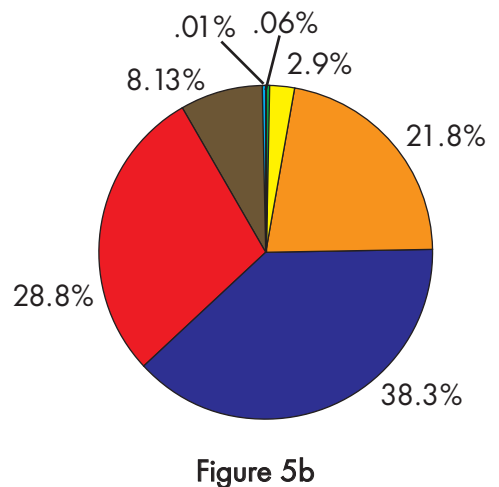
## PROSTATE CANCER

Figure 5 demonstrates a more specific age breakdown.

Age Distribution – Prostate Cancer  
1996-2006 – Analytic Cases



Age Distribution – Prostate Cancer  
2005 – NCDB Cases



As illustrated in Figures 5a and 5b the age adjusted incidence rates of prostate cancer at Trinity Health closely approximates that reported by NCDB for 2005.

## PROSTATE CANCER HISTOLOGY

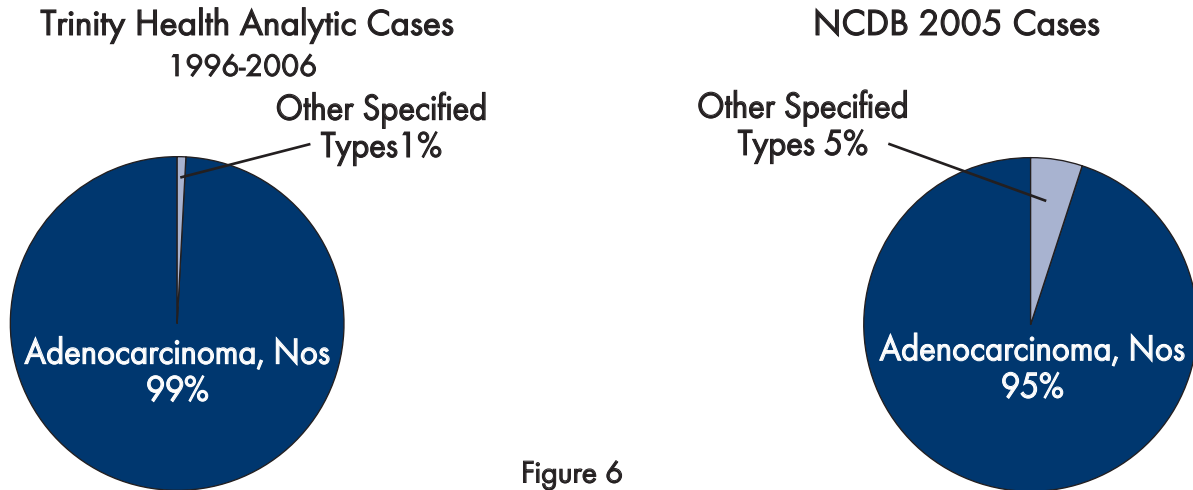


Figure 6

Overall comparison, shows that histology for prostate cancer at Trinity Health was similar to data from the NCDB.

## TREATMENT

Overall comparison, shows that treatment for lung cancer at Trinity Health was similar to data from the NCDB.

### PROSTATE CANCER Treatment Combinations For All Stages (in percentages)

	TH 1996-2006	NCDB 2005
Surgery Only	38.3%	42.1%
Radiation Only	24.2%	22.8%
Radiation and Hormone	17.6%	15.6%
Surgery and Hormone	1.7%	2.3%
Hormone Therapy Only	7.3%	4.7%
Other Specified Therapy	3.5%	3.8%
No 1st Course Rx	7.4%	8.6%

# PROSTATE CANCER

Observed survival for all stages and by individual AJCC stage. In order to obtain more specific survival information relative to stage, a benchmark summary of cancer care and survival was used. This information was provided by the Commission on Cancer from the National Cancer Database (NCDB), 1998-2000. The statistics analyzed were for prostate cancer cases diagnosed and treated in 1996-2006. Figure 9 demonstrates individual stages, a comparison of Trinity to NCDB statistics. It shows that the survival statistics for prostate cancer at Trinity approximates that of the NCDB.

## PROSTATE CANCER 1996-2006

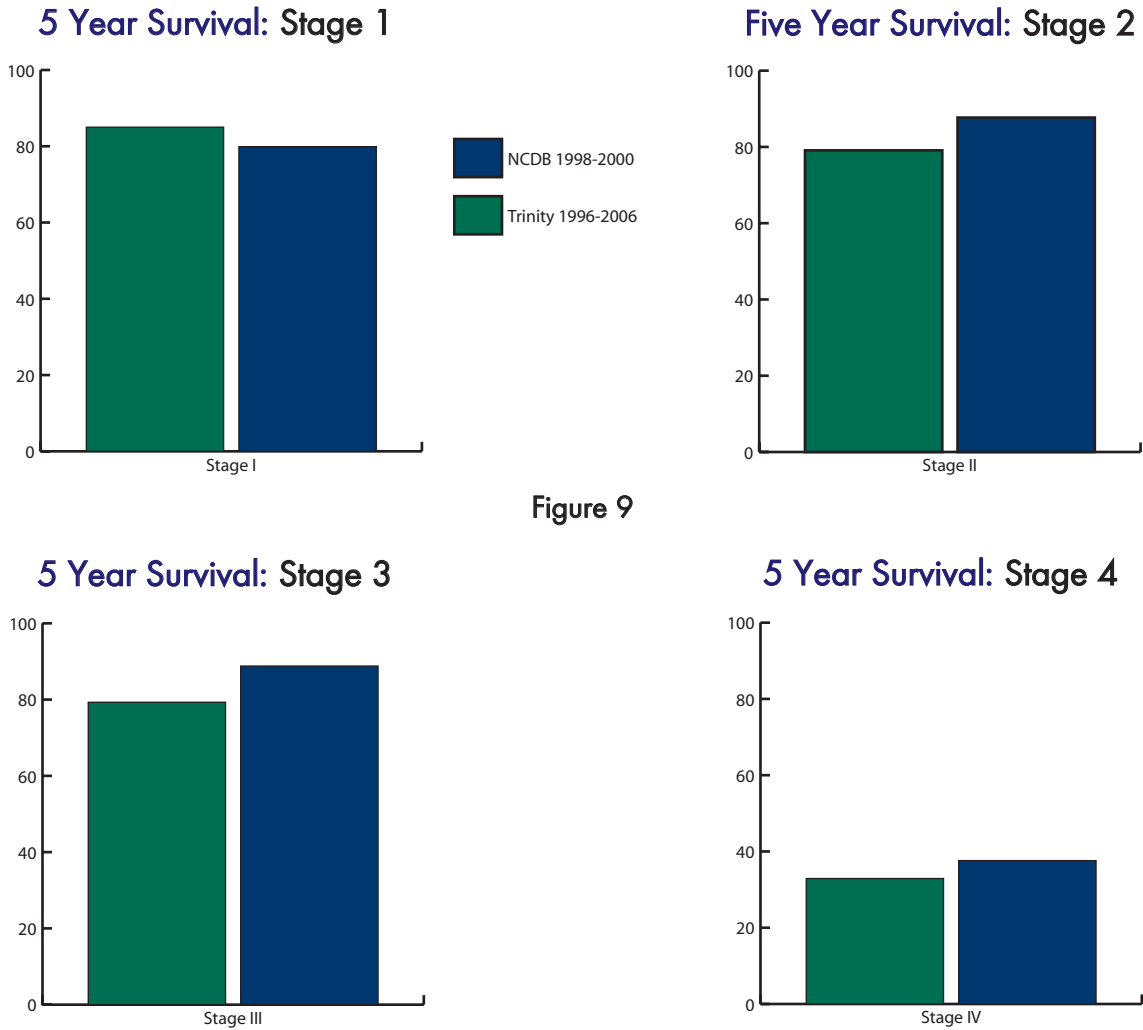


Figure 9

*Kevin Collins M.D.*

Kevin B. Collins, MD  
Radiation Oncology, Trinity CancerCare Center

References available upon request.